



Neugablonz

03 Arch. - Ersatzneubau Wettbewerb, 2010



Neugablonz



Schwarzplan Neugablonz, 2015



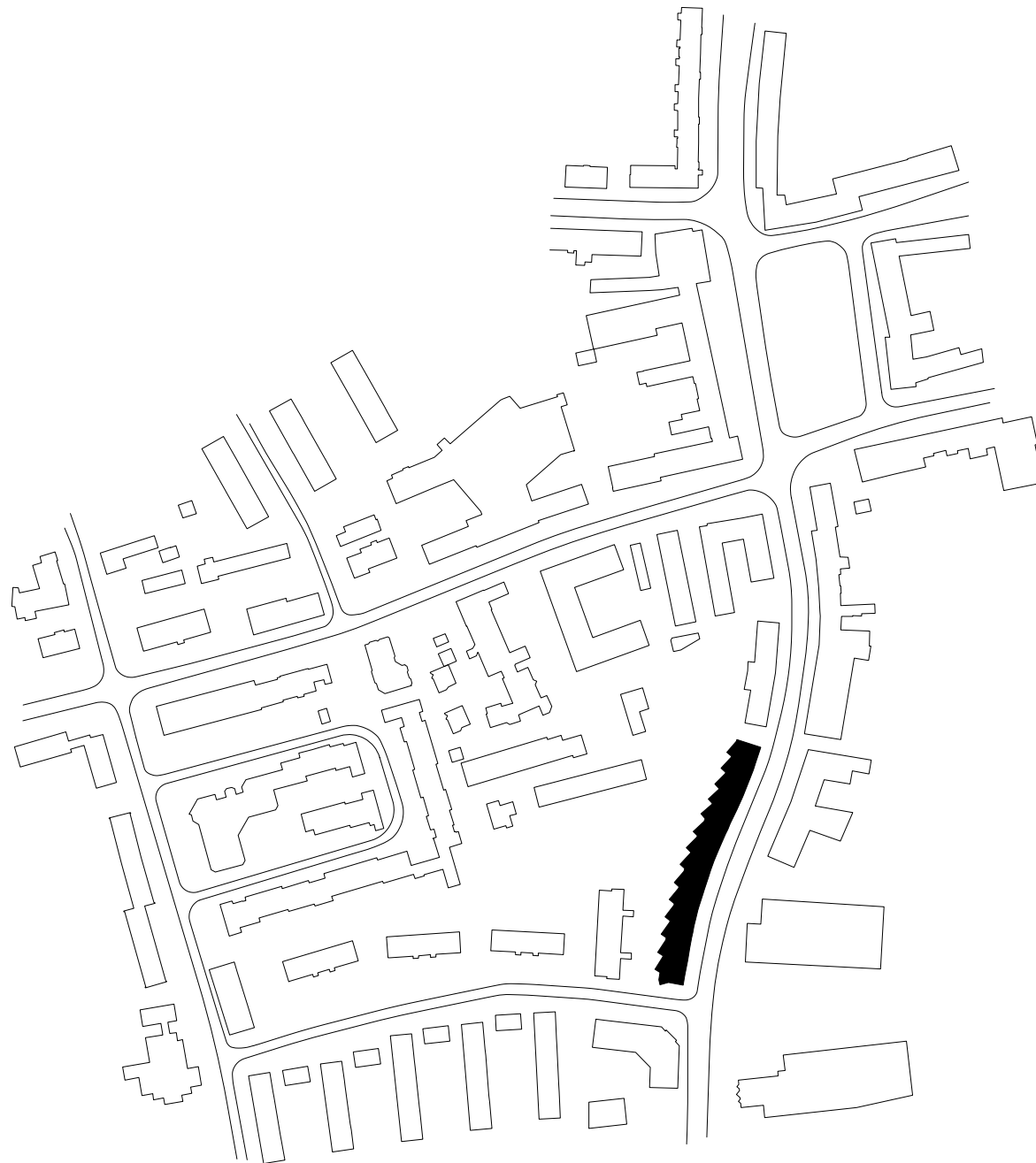
Bestandssituation, Neugablonz



Bebauungsgrundstück, Neugablonz



Straßenräume, Neugablonz



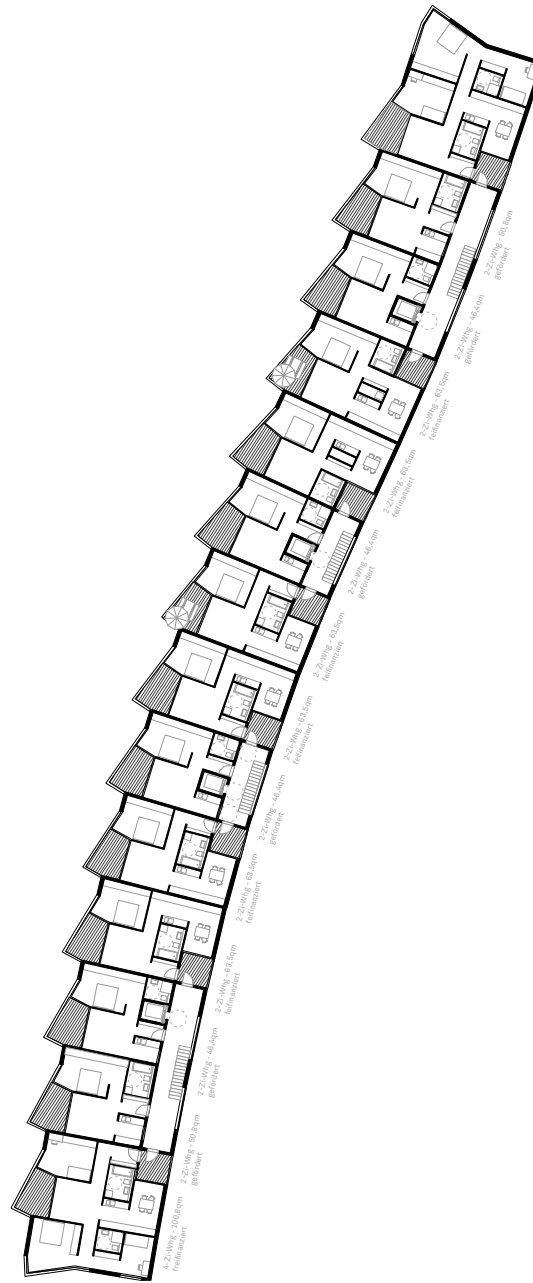
03 Arch. - Lageplan, Neugablonz



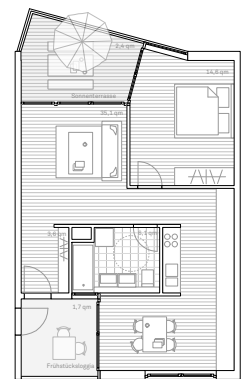
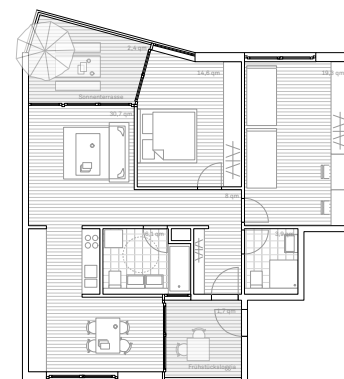
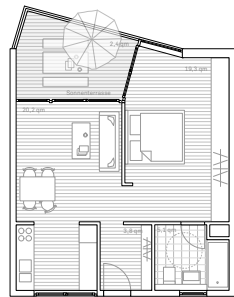
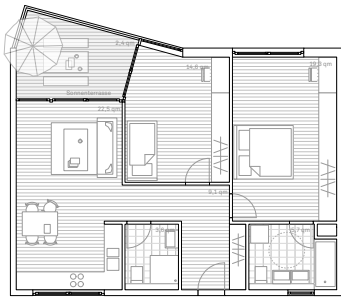
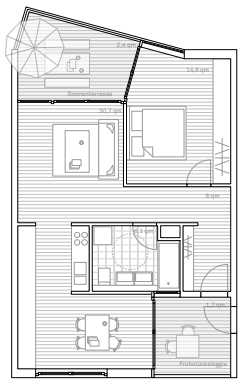
03 Arch. - Grundriss Erdgeschoss, Neugablonz



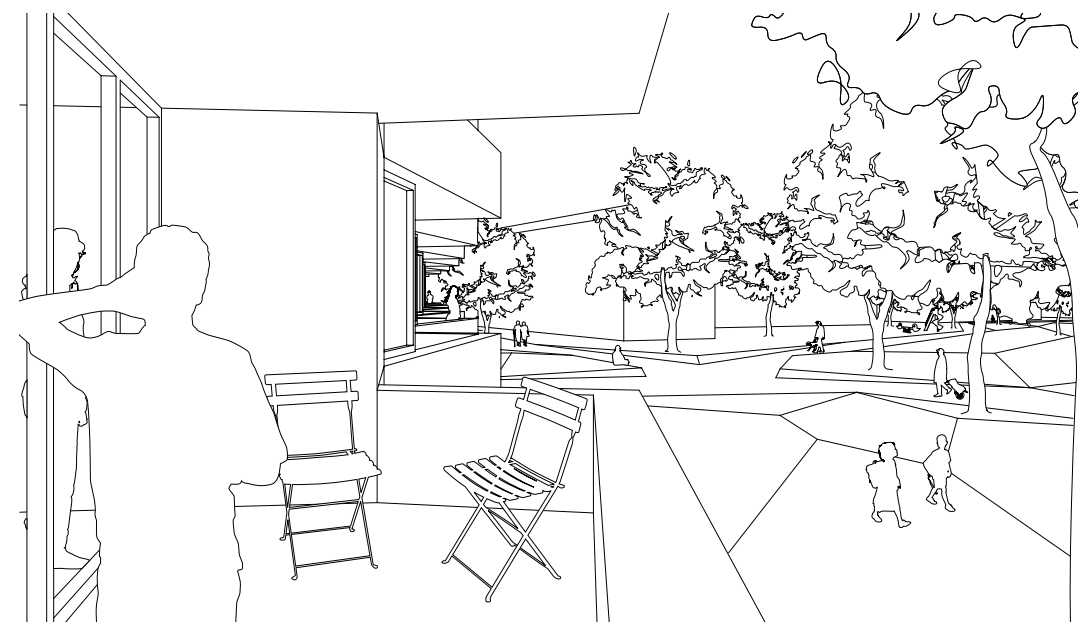
Straßenseite



03 Arch. - Grundriss Regelgeschoss, Neugablonz



03 Arch. - Wohnungstypologien, Neugablonz



03 Arch. - Wettbewerb Neugablonz



Gartenseite Süd



Gartenseite Nord



Reichertshofen Annahof
Arge omarc / 03 Arch. - Mehrgenerationenwohnhaus



Grundstück im Kontext



Planung im Kontext



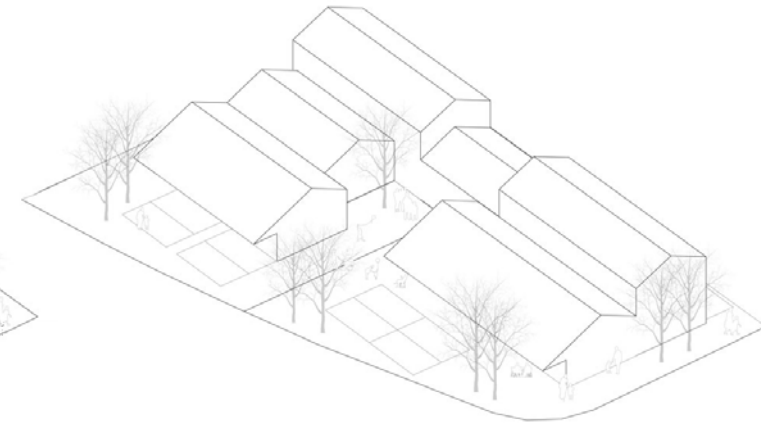
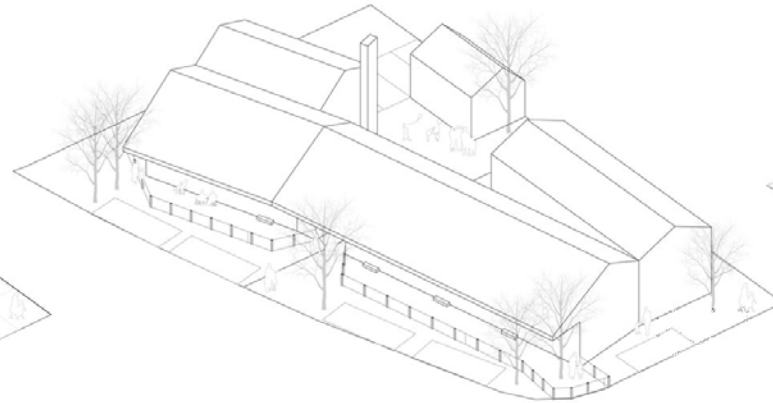
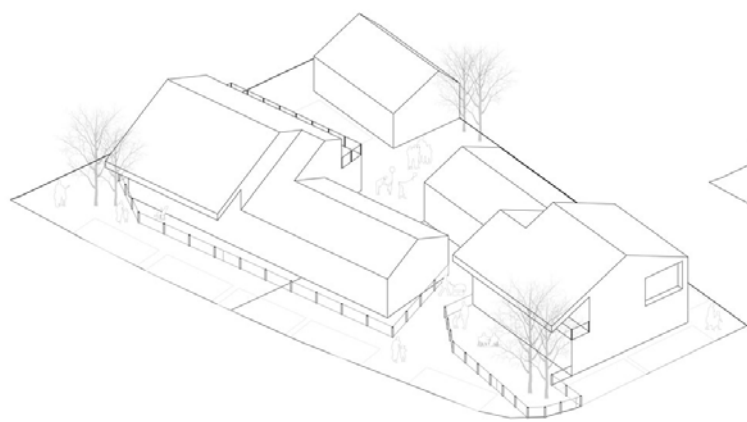
Baurechtliche Situation



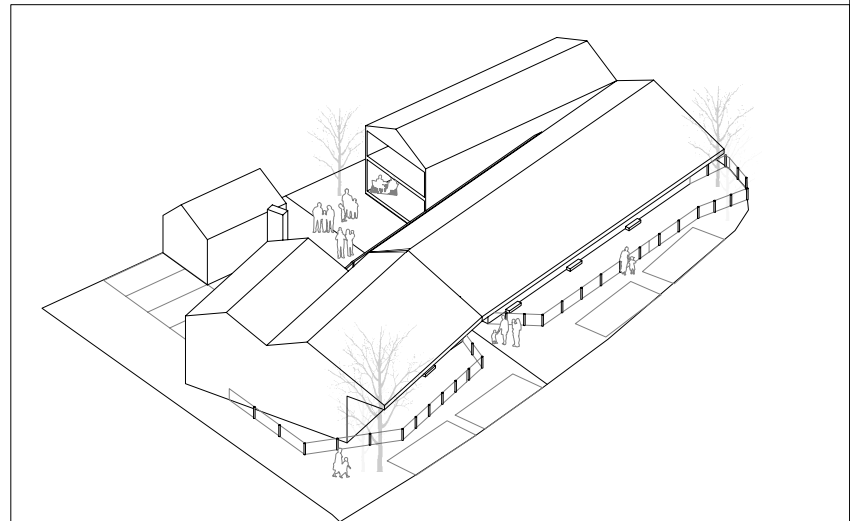
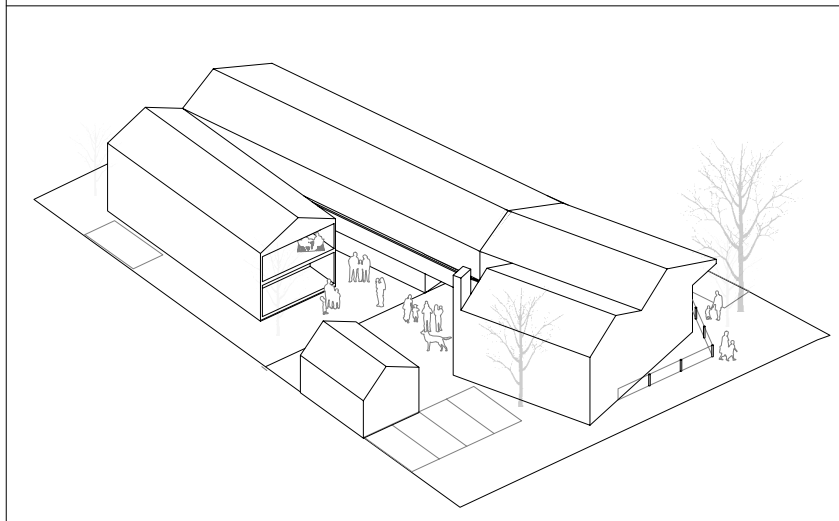
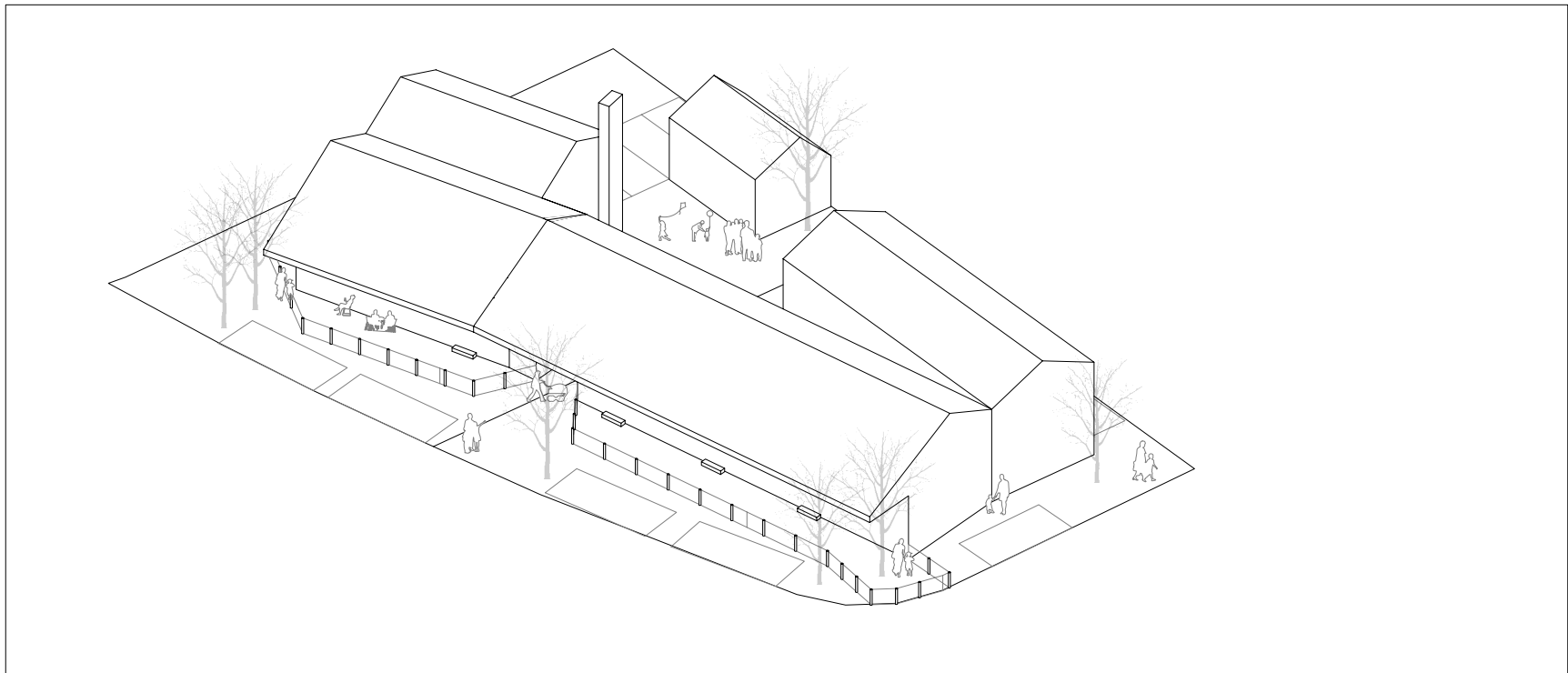
Bestandsgebäude Scheune



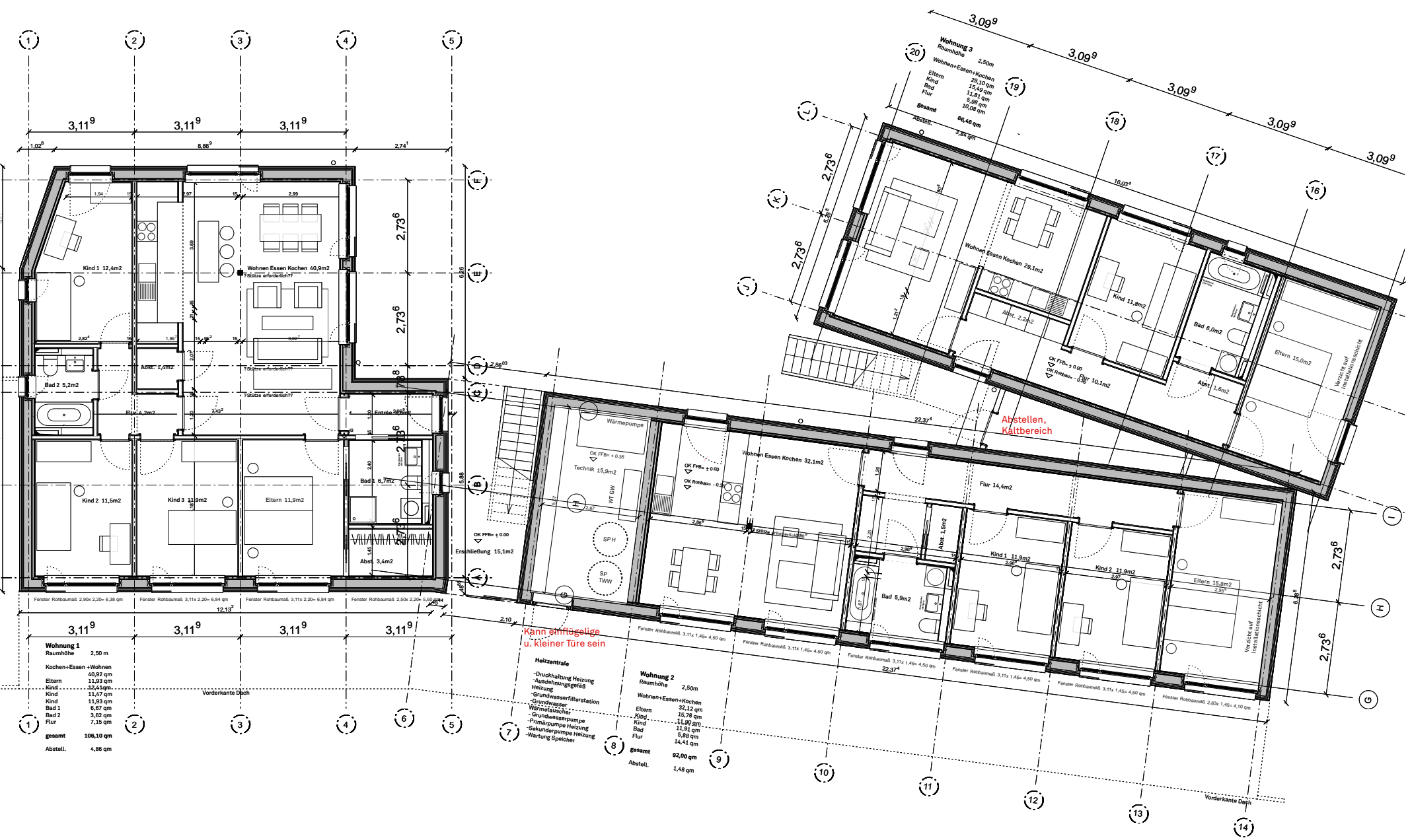
Scheune des Aussiedlerhofs des Bauherren



Untersuchung verschiedener typologischer Ansätze



Isometrie der aktuellen Planung



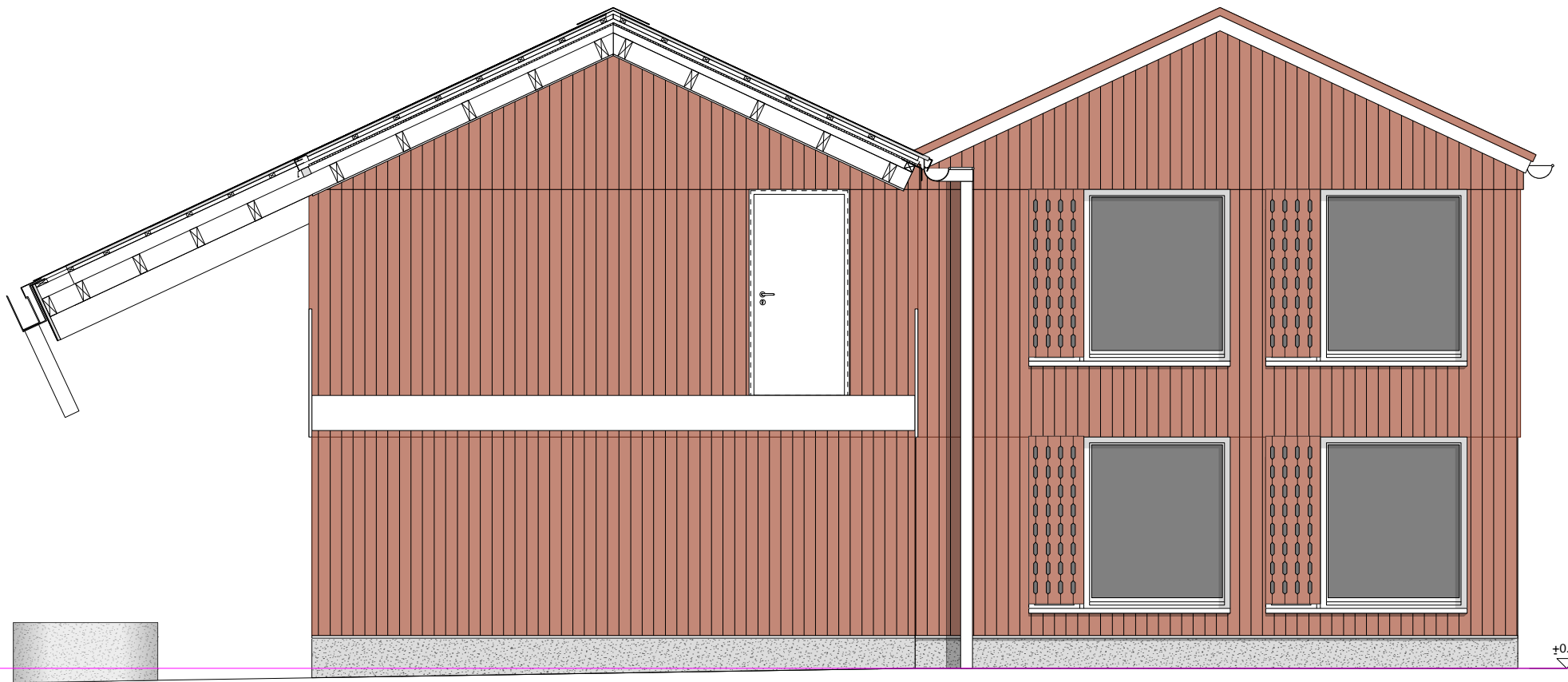
Grundriss Erdgeschoss



Schrägdachbereich

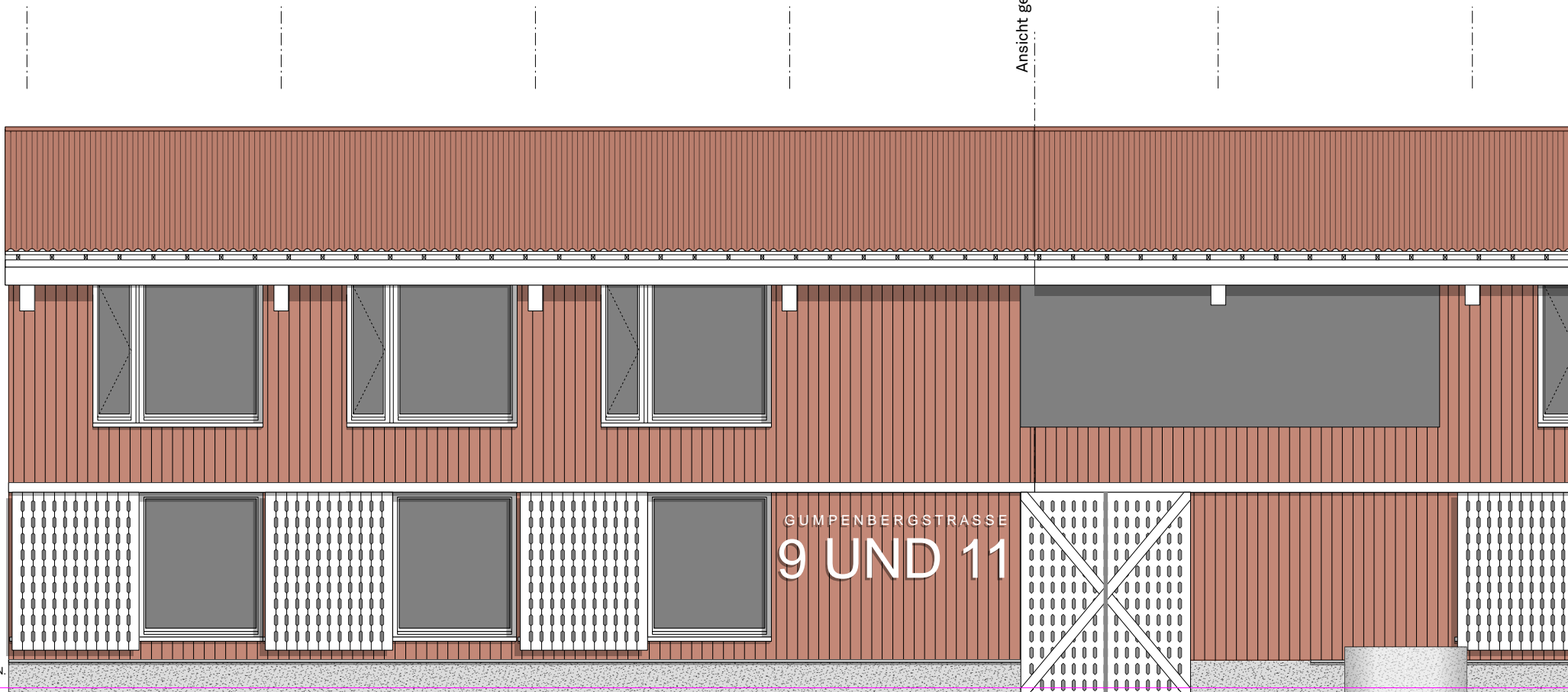
Evtl. auch geschl. Wandbereiche

Grundriss Obergeschoss



Schnittansicht durch Empore

Ansicht geklappt



GUMPENBERGSTRASSE
9 UND 11

+0.00= 377.21 über N.N.

Längsansicht



Gump & Maier
BAUUNTERNEHMEN
Gump & Maier
Bauelemente
Bauelemente

SCHNITZ
BAUELEMENTE

DIKZ
TOILETTE















Franzbauer, Weichering



An der Ach, Weichering



omarc - Haus AF, Weichering



Pfarrhof, Weichering



Ortsrand, Lichtenau

